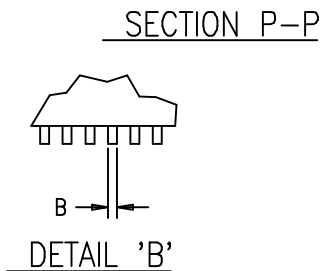
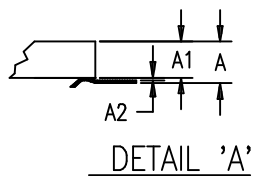
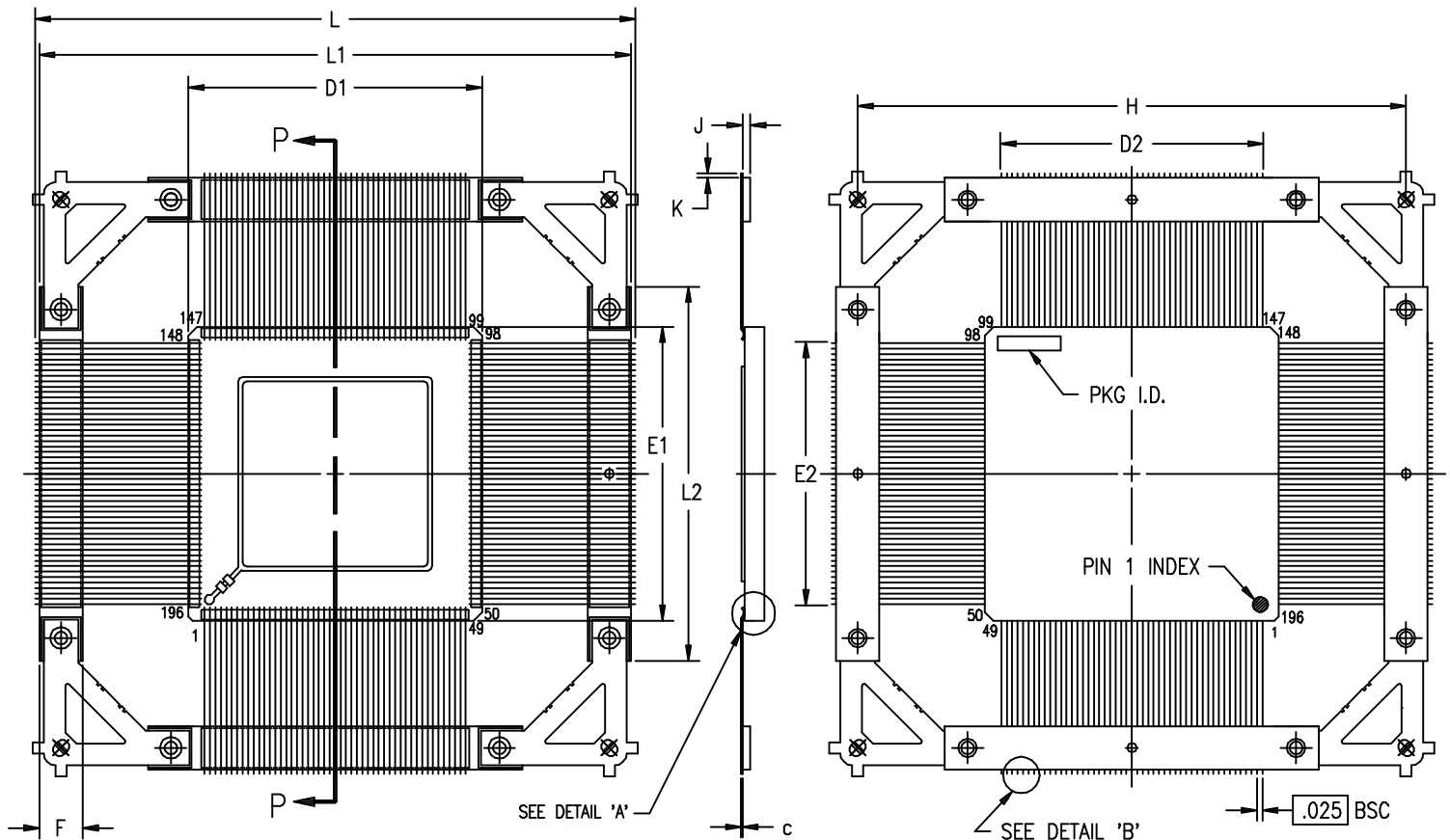


LID SIDE

NON LID SIDE



NOTES:

1. ALL DIMENSIONS AND TOLERANCES CONFORM TO ANSI Y14.5M-1982
2. SYMBOL "N" IS THE NUMBER OF TERMINALS.
3. PACKAGES ARE SHIPPED UNFORMED.
4. LEAD FINISH: GOLD (50 MICROINCHES MINIMUM) OVER NICKEL PER MIL-I-38535

SYMBOL	INCHES		
	MIN.	NOM.	MAX.
A	\sim	\sim	.130
A1	.081	.090	.105
A2	\sim	\sim	.020
B	.007	\sim	.012
C	.005	.006	.009
D1/E1	1.336	1.350	1.364
D2/E2	1.200 BSC		
F	.175	.200	.225
H	2.300 BSC		
J	.030	.035	.040
K	\sim	\sim	.020
L	2.500	\sim	2.580
L1	2.470	2.500	2.530
L2	1.700	1.720	1.740
N	196		

196-PIN CERAMIC BRAZED CQFP (CB196)