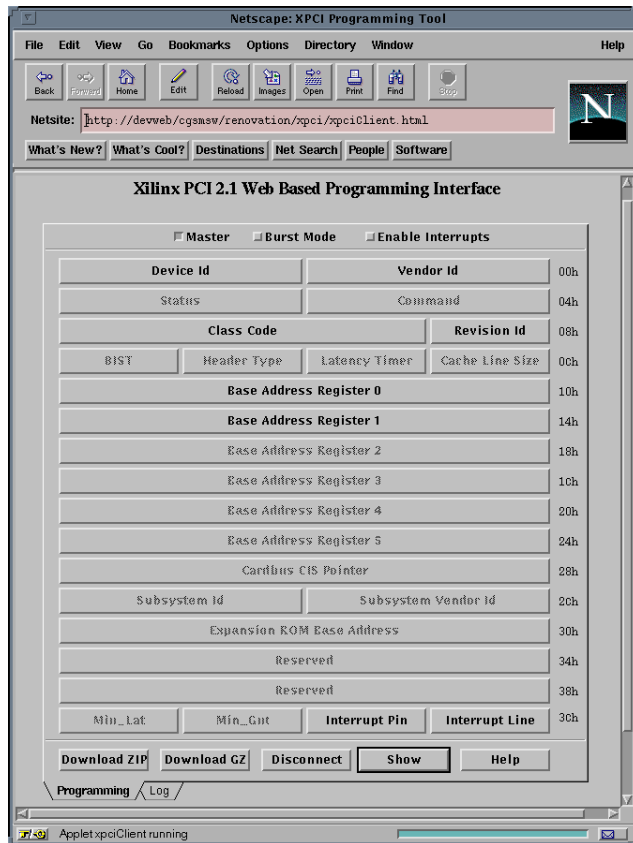


Demonstration Screens CORE Configuration Tool for PCI

CORE Configuration Tool for PCI



- Core configuration
 - Master (Initiator/Target)
 - Slave (Target-only)
 - Burst or no-burst
 - Enable Interrupts
- Configuration Space
 - Device ID
 - Vendor ID
 - Class Code
 - Revision ID
 - Base Address Register 0
 - Base Address Register 1

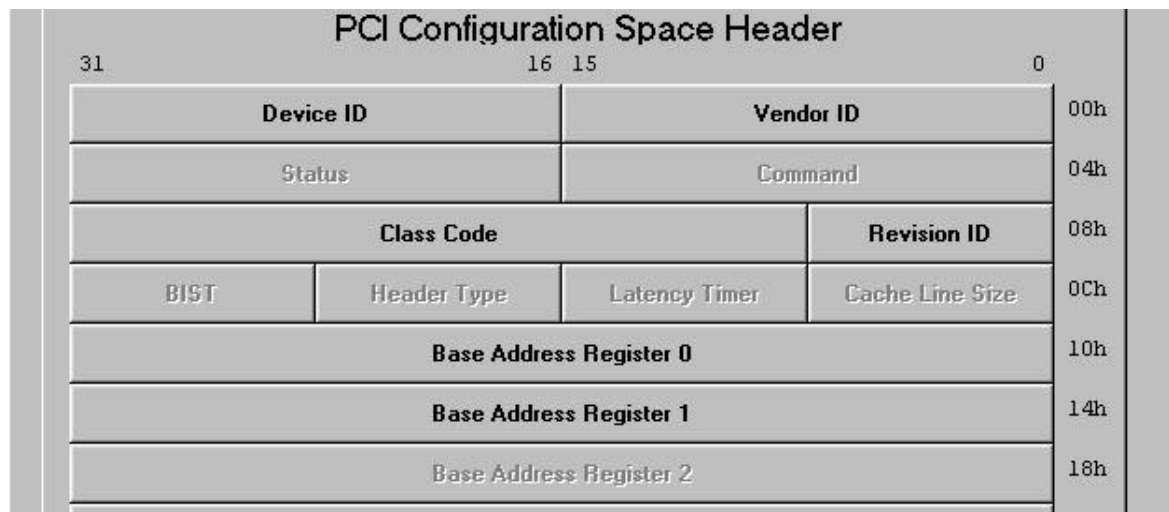
Xilinx Home Page: www.xilinx.com/products/logiccore/logiccore.htm

Configure the LogiCORE PCI Interface



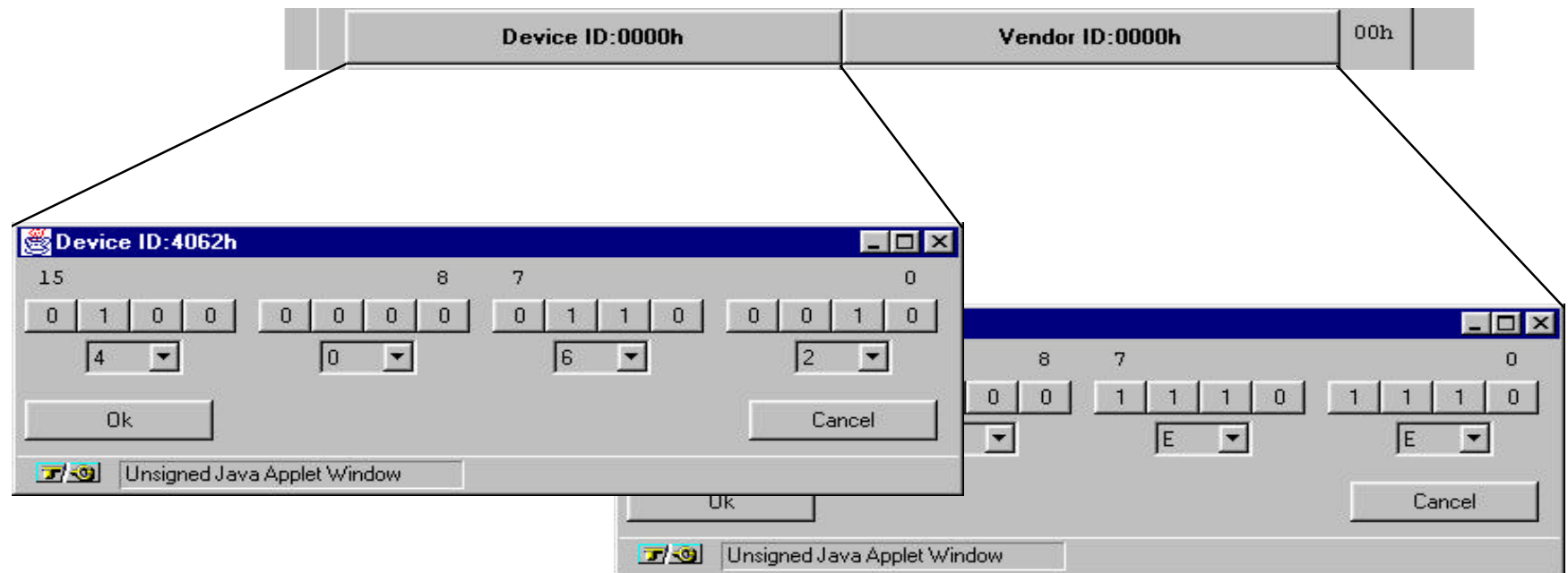
☒ Master
 ☒ Burst Mode
 ☐ Enable Interrupts

- Select Master/Slave, Enable/Disable Burst Mode and Enable/Disable Interrupts by setting the checkboxes



- Set up the PCI Configuration Space Header by clicking on the desired button. Greyed out boxes are dynamically configured or not supported.

Setting the Device and Vendor ID



- Values are entered binary or hexadecimal

Setting the Class Code

The top screenshot shows a window titled "Class Code: 000000h" with three input fields for setting the PCI class code. The fields are labeled "Class Code", "Sub-Class Code", and "Interface". The values are 00h, 00h, and 00h respectively. A "Cancel" button is at the bottom right.

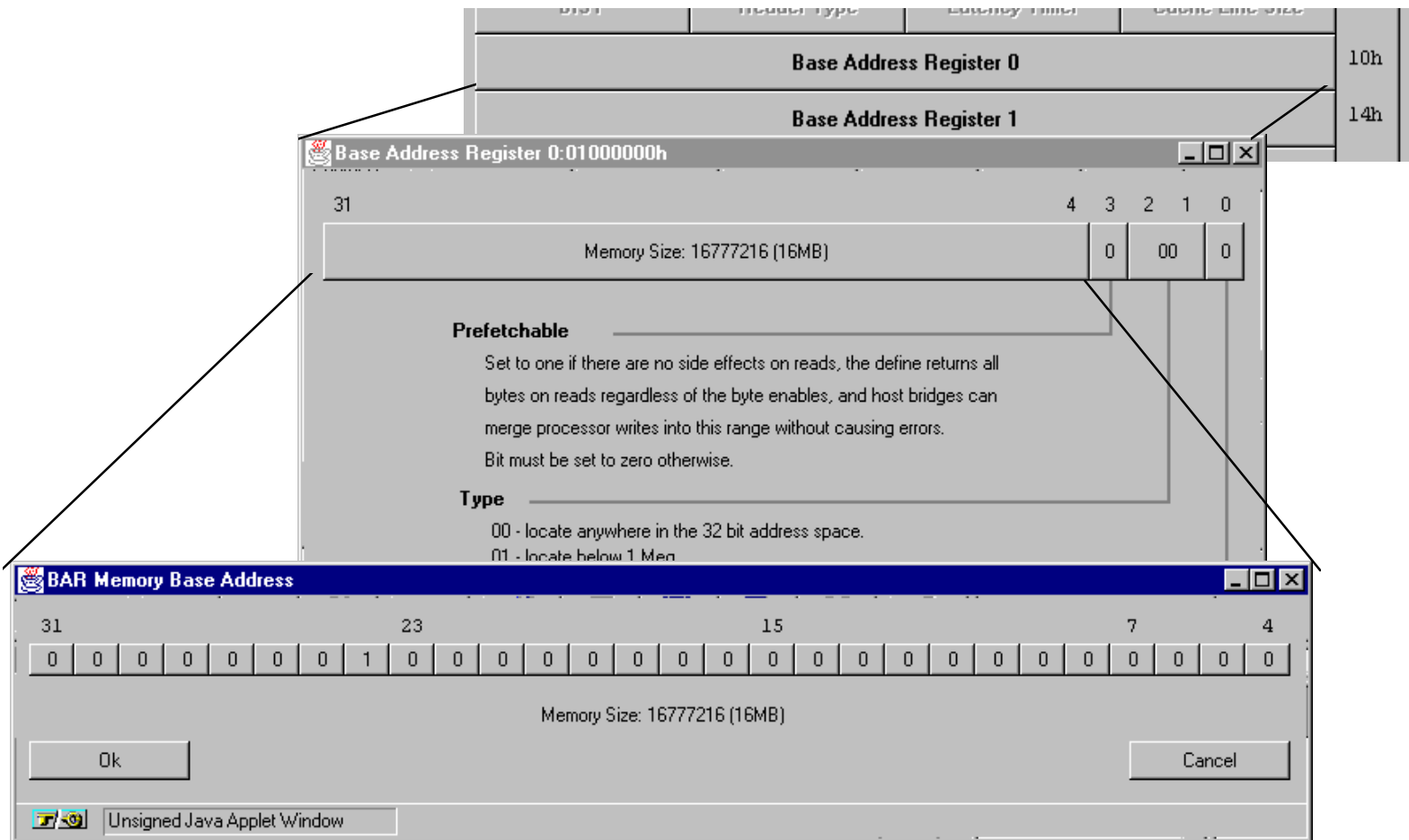
The bottom screenshot shows a window titled "Class Code" with a table of valid class codes and their meanings. The table has two columns: "Base Class" and "Meaning".

Base Class	Meaning
00h	Device was built before final Class Code definitions.
01h	Mass storage controller.
02h	Network controller.
03h	Display controller.
04h	Multimedia device.
05h	Memory controller.
06h	Bridge device.
07h	Simple communication controllers.
08h	Base system peripherals.
09h	Input devices.
0Ah	Docking stations.
0Bh	Processors.
0Ch	Serial bus controllers.
0D - FEh	Reserved.
FFh	Devices does not fit in any defined category.

At the bottom of the window, there is a status bar that says "Unsigned Java Applet Window".

- Valid class codes are listed with description

Setting the BARs



- Data is entered by clicking on pre-defined options

Download

Reserved				38h
Max_Lat	Min_Gnt	Interrupt Pin	Interrupt Line	3Ch
<div>Download Show Help</div>				
Programming		Log		

- Use the download button to generate and download the design files