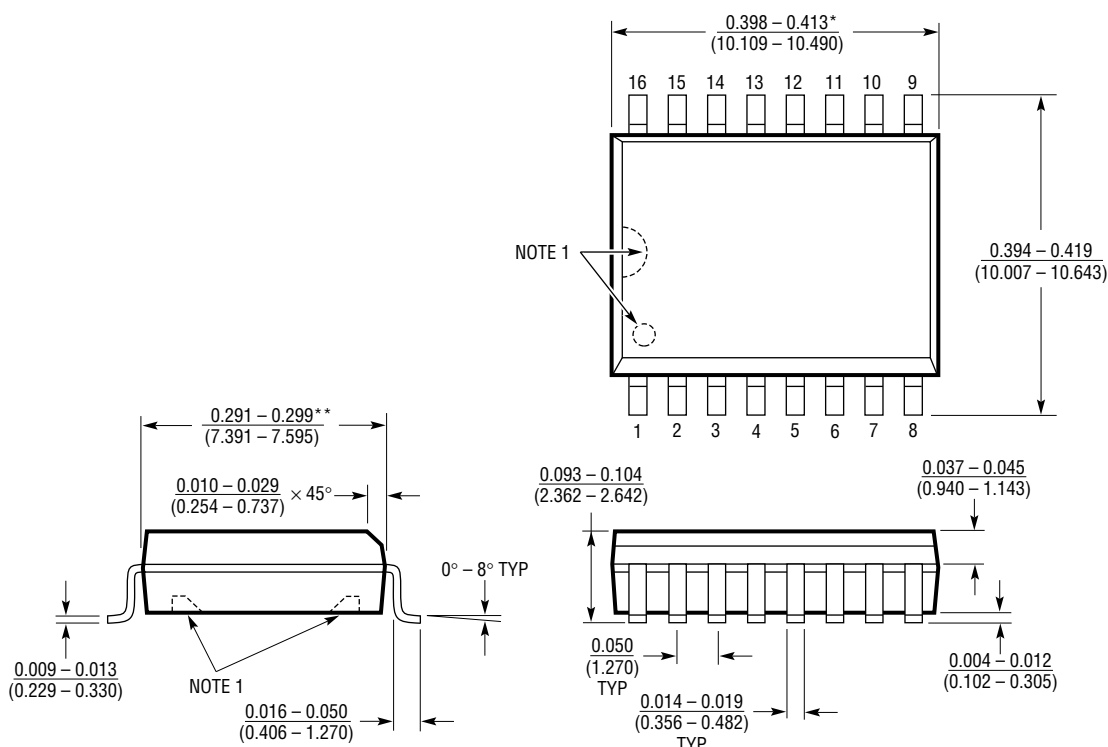


The package on the **LTC[®]1164-6** Rev A, 10/96 data sheet is incorrect. The correct package for the **LTC1164-6** is shown below.

PACKAGE DESCRIPTION

Dimensions in inches (millimeters) unless otherwise noted.

SW Package 16-Lead Plastic Small Outline (Wide 0.300) (LTC DWG # 05-08-1620)




NOTE:

1. PIN 1 IDENT, NOTCH ON TOP AND CAVITIES ON THE BOTTOM OF PACKAGES ARE THE MANUFACTURING OPTIONS. THE PART MAY BE SUPPLIED WITH OR WITHOUT ANY OF THE OPTIONS

*DIMENSION DOES NOT INCLUDE MOLD FLASH. MOLD FLASH SHALL NOT EXCEED 0.006" (0.152mm) PER SIDE

**DIMENSION DOES NOT INCLUDE INTERLEAD FLASH. INTERLEAD FLASH SHALL NOT EXCEED 0.010" (0.254mm) PER SIDE

S16 (WIDE) 0396

 LTC and LT are registered trademarks of Linear Technology Corporation.

For further information regarding this specification notice contact:

Linear Technology Corporation
 1630 McCarthy Blvd.
 Milpitas, California 95035-7487
 Attn: Product Marketing Manager
 Phone: (408) 432-1900, x2456