

Introduction

There is a growing need for innovative design techniques to increase the system throughput using the currently available Programmable Logic Devices (PLDs). One way of improving the system throughput is to make use of Lattice Semiconductor's GAL20RA10. By taking advantage of the unique architecture featuring an individually controlled clock on each of the Output Logic Macro Cell (OLMC) registers, the resolution of the control signals generated by a GAL20RA10-based state machine can be doubled. The design example shown in this application note takes advantage of this feature in a Dynamic RAM (DRAM) control logic design.

Design Example

The most common control signals generated by DRAM control logic are the Row Address Strobe (RAS) and the Column Address Strobe (CAS). The timing requirements of these control signals are strictly governed by the DRAM's timing requirements. Based on the DRAM's

timing requirement, Figure 1a shows how the RAS and CAS control signals are generated from a standard PLD device which has only one dedicated active high clock signal driving all the output registers. The basic constraint of the high-to-low transition of RAS signal to the high-to-low transition of CAS signal for the 100ns DRAM is 15ns minimum (row address hold time after RAS).

As illustrated in Figure 1b, the activation of CAS signal is unnecessarily delayed because of the limitations of the standard PLD's single active-high clock driving all the output registers. This limitation is not a reflection of the DRAM's requirements but rather a limitation of the standard PLD.

Design engineers can improve this design method by using the GAL20RA10's independent OLMC clocks. Figure 2b shows the RAS and CAS signals being driven by both the rising and falling edges of the clock signal. This technique can be implemented in the GAL20RA10 by simply feeding the complement of the clock input from the RAS control register to the CAS control register, as shown in Figure 2a.

Figure 1a. Standard PLD Design with a Single Active-High Clock

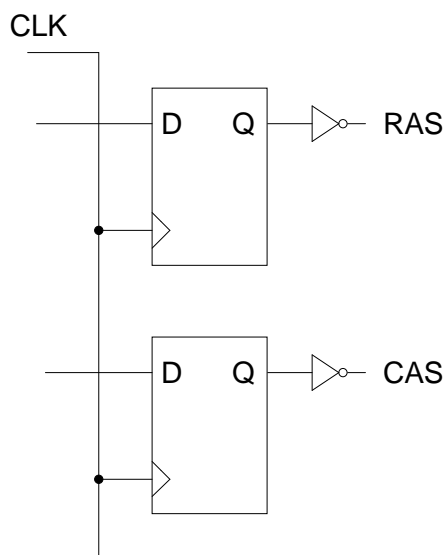
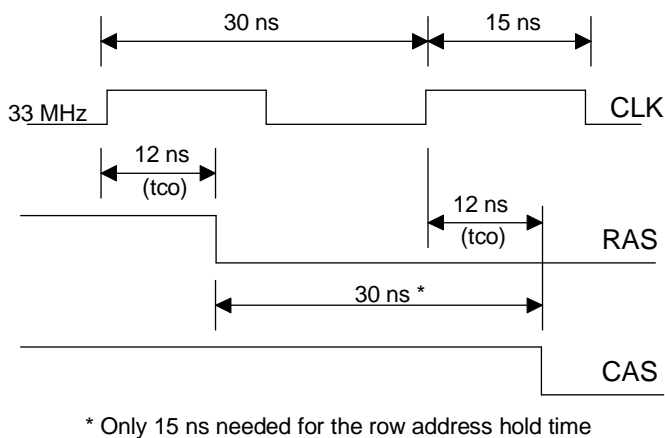


Figure 1b. Control Signal Generation with a Single Active-High Clock



GAL20RA10: Programmable Clocks Improve System Performance

Summary

The individual clock control on the OLMC is one of several different individual product-term controlled features which are available on the GAL20RA10. Other individual product-term controlled signals of the GAL20RA10 include the Asynchronous Preset (AP) and Asynchronous Reset (AR). These signals can also be used, similar to the clock signal, to enhance system performance. In addition to these features, the GAL20RA10 has an external preload (PL) capability to improve the control over the register contents — especially in state machine design. The full GAL20RA10 macrocell architecture is shown below, in Figure 3.

Figure 2a. Standard PLD Design with Dual-Polarity Clocks

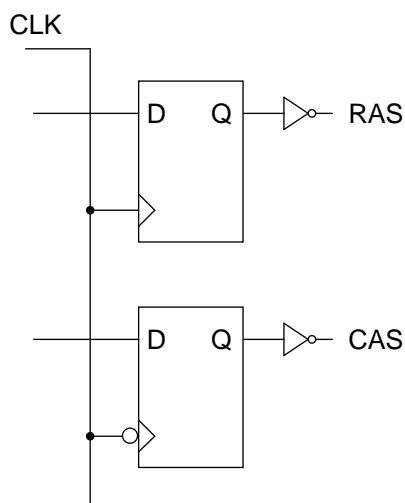


Figure 2b. Control Signal Generation Using a GAL20RA10

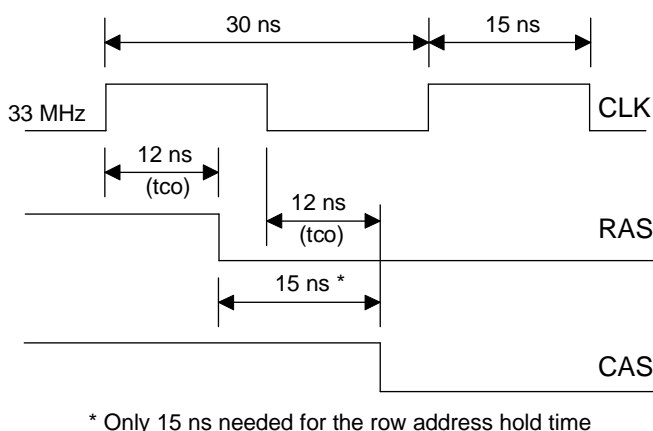
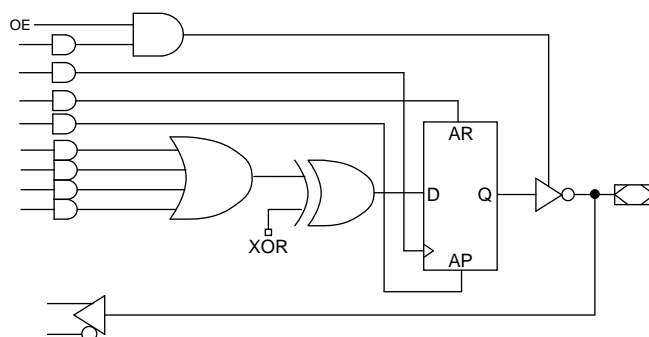


Figure 3. GAL20RA10 Macrocell





Copyright © 1996 Lattice Semiconductor Corporation.

E²CMOS, GAL, ispGAL, ispLSI, pLSI, pDS, Silicon Forest, UltraMOS, Lattice Logo, L with Lattice Semiconductor Corp. and L (Stylized) are registered trademarks of Lattice Semiconductor Corporation (LSC). The LSC Logo, Generic Array Logic, In-System Programmability, In-System Programmable, ISP, ispATE, ispCODE, ispDOWNLOAD, ispGDS, ispStarter, ispSTREAM, ispTEST, ispTURBO, Latch-Lock, pDS+, RFT, Total ISP and Twin GLB are trademarks of Lattice Semiconductor Corporation. ISP is a service mark of Lattice Semiconductor Corporation. All brand names or product names mentioned are trademarks or registered trademarks of their respective holders.

Lattice Semiconductor Corporation (LSC) products are made under one or more of the following U.S. and international patents: 4,761,768 US, 4,766,569 US, 4,833,646 US, 4,852,044 US, 4,855,954 US, 4,879,688 US, 4,887,239 US, 4,896,296 US, 5,130,574 US, 5,138,198 US, 5,162,679 US, 5,191,243 US, 5,204,556 US, 5,231,315 US, 5,231,316 US, 5,237,218 US, 5,245,226 US, 5,251,169 US, 5,272,666 US, 5,281,906 US, 5,295,095 US, 5,329,179 US, 5,331,590 US, 5,336,951 US, 5,353,246 US, 5,357,156 US, 5,359,573 US, 5,394,033 US, 5,394,037 US, 5,404,055 US, 5,418,390 US, 5,493,205 US, 0194091 EP, 0196771B1 EP, 0267271 EP, 0196771 UK, 0194091 GB, 0196771 WG, P3686070.0-08 WG. LSC does not represent that products described herein are free from patent infringement or from any third-party right.

The specifications and information herein are subject to change without notice. Lattice Semiconductor Corporation (LSC) reserves the right to discontinue any product or service without notice and assumes no obligation to correct any errors contained herein or to advise any user of this document of any correction if such be made. LSC recommends its customers obtain the latest version of the relevant information to establish, before ordering, that the information being relied upon is current.

LSC warrants performance of its products to current and applicable specifications in accordance with LSC's standard warranty. Testing and other quality control procedures are performed to the extent LSC deems necessary. Specific testing of all parameters of each product is not necessarily performed, unless mandated by government requirements.

LSC assumes no liability for applications assistance, customer's product design, software performance, or infringements of patents or services arising from the use of the products and services described herein.

LSC products are not authorized for use in life-support applications, devices or systems. Inclusion of LSC products in such applications is prohibited.

LATTICE SEMICONDUCTOR CORPORATION

5555 Northeast Moore Court
Hillsboro, Oregon 97124 U.S.A.

Tel.: (503) 681-0118

FAX: (503) 681-3037

<http://www.latticesemi.com>

November 1996
